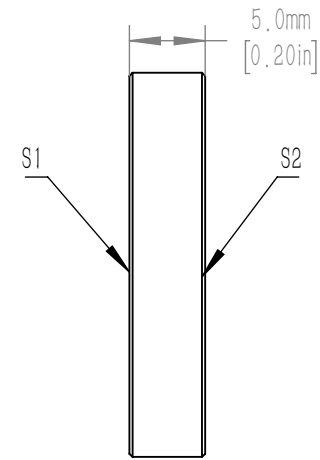
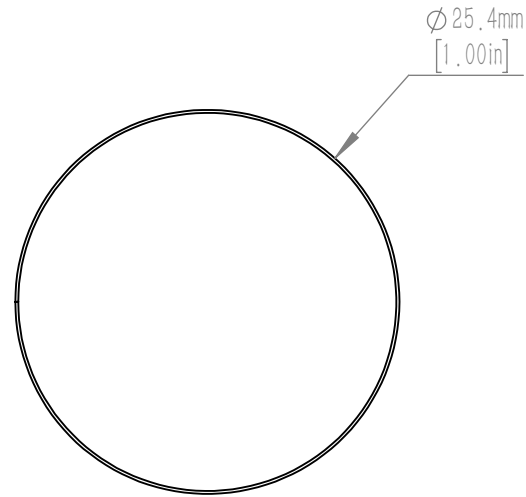


FOR INFORMATION ONLY NOT FOR
MANUFACTURING PURPOSES



NOTES/SPECIFICATIONS:

1. CLEAR APERTURE: $\geq \phi 22.86\text{mm}$
2. SURFACE FLATNESS: $\leq \lambda/10 @ 633\text{nm}$
3. SURFACE QUALITY: 20-10 SCRATCH-DIG
4. THICKNESS TOLERANCE: $\pm 0.30 \text{ mm}$
5. DIAMETER TOLERANCE: $+0.00/-0.20 \text{ mm}$
6. PARALLELISM: $\leq 5 \text{ arcsec}$
7. COATING(S1 & S2): BBAR RAVG $< 0.5\%$
FROM 650-1100nm, $0^\circ \pm 5^\circ \text{ AOI}$

DRAWING PROJECTION							
	NAME	DATE	D25.4mm, UVFS Polished Window Blank, 5mm, -B				
DRAWN	CWD	2022/5/18	WG4254-5-B				
APPROVAL	ZSB	2022/5/18	MATERIAL	WEIGHT	SCALE	REV	
FOR INFORMATION ONLY NOT FOR MANUFACTURING PURPOSES			UV GRADE FUSED SILICA	0.006225kg	2:1	A	